

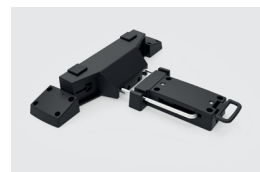
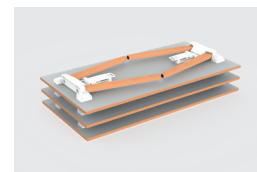
A-TOP



A-TOP

Weight	Beech: approx. 10,7 kg
	Chrome: approx. 10,0 kg
Frame Load (incl. table top weight)	75 kg (static load)
Materials	Beech wood Polyamide glass fibre reinforced (recyclable) chrome
Frame height	Beech: approx. 705 mm
	Chrome Ø 35 mm: approx. 706 mm
Min. table length*	Beech: 1400 mm
	Chrome Ø 35 mm: 1200 mm
Min. table width	All versions: 600 mm
Fitting option	black
	white
Leg option	Chrome Ø 35 mm
	Beech 70/40 mm

* From a table length of 1400 mm, we recommend the optional traverse set to prevent the table top from bending, depending on the table top thickness.



PRODUCT FEATURES

MAINTENANCE-FREE FOLDING TABLE FITTING MECHANISM

A-TOP is made from recyclable, glass-fibre reinforced polyamide and offers a maintenance-free solution with a high durability.

LOCKING MECHANISM

The locking mechanism is equipped with a 10 mm chrome-plated wire that is self-adjusting, ensuring reliable security.

INTEGRATED STACKING PUFFER

The integrated stacking buffer of the A-Top folding table frame protects the table tops during stacking, allowing for space-saving storage.

VERSATILE APPLICATION

A-TOP is the ideal solution for versatile spaces, such as training rooms, temporary workstations, cafeterias, and more, due to its adaptability.

DURABLE CONSTRUCTION

The durable construction ensures a long lifespan and high resilience, even in demanding environments.